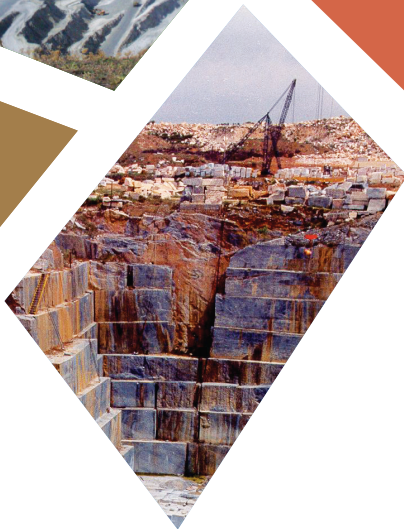
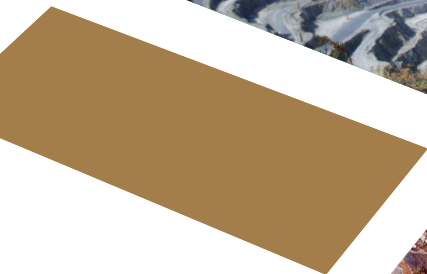


Mineral resources in sustainable land-use planning



MinLand



www.minland.eu

What is MinLand about?

The MinLand project has been designed to meet challenges concerning competing land use planning related to different land-use interests. Securing access to land for exploration and extraction of minerals, including critical raw materials, in an integrated and optimized process, is of great importance.

Competition about the use of land is fierce within Europe. Currently, the need for metals, construction raw materials and industrial minerals is increasing. There is a significant need for access to land for exploration and extraction of mineral raw materials.

EU has recognised the need to share guidelines between members about harmonised land use and mineral policy strategies, that will allow extraction of metals, construction and industrial minerals within Europe. In a global context Europe is also obliged to take a shared burden of extraction and not only consumption.

The Horizon 2020 project MinLand, therefore deals with:

- Establishing a database of legislation and policy regarding minerals land use and general land use across Europe
- Analysing different land use cases of mineral exploration and extraction
- Developing a guideline regarding the most successful process of exploration and extraction with a focus upon an optimised and sustainable land use process and mineral extraction, with a focus on good case examples

The overarching objectives of the MinLand project

The main goal for the MinLand project is to ensure access to areas with actual or potentially valuable resources for mineral exploration and exploitation activities within the EU. Exploration and exploitation are required in order to secure European access to necessary raw materials, including critical raw materials (CRM). In order to achieve this goal, the MinLand project will pursue four overarching objectives:

- 1 Knowledge repository
- 2 Facilitate minerals and land use policy making
- 3 Strengthen transparent land use practices
- 4 Foster networking

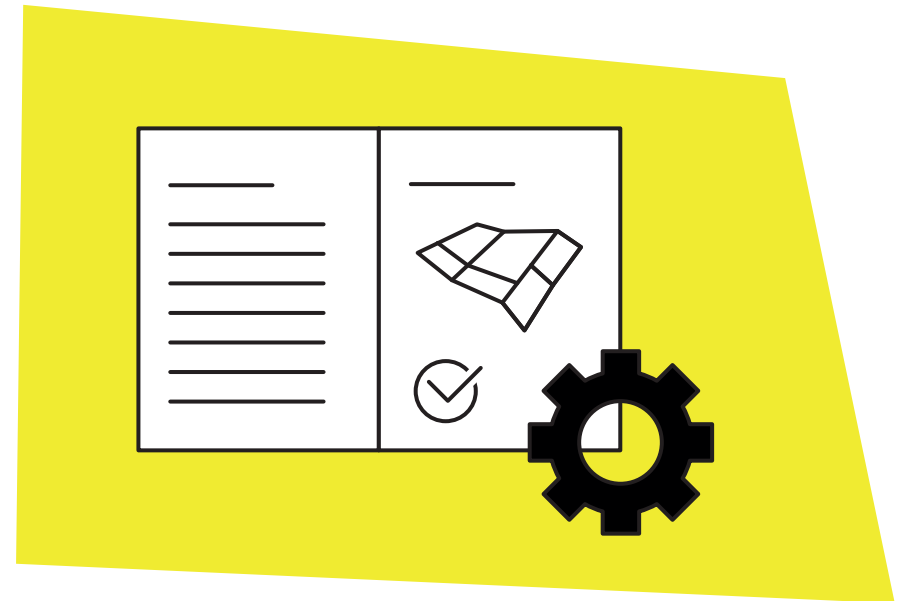


1 Knowledge repository



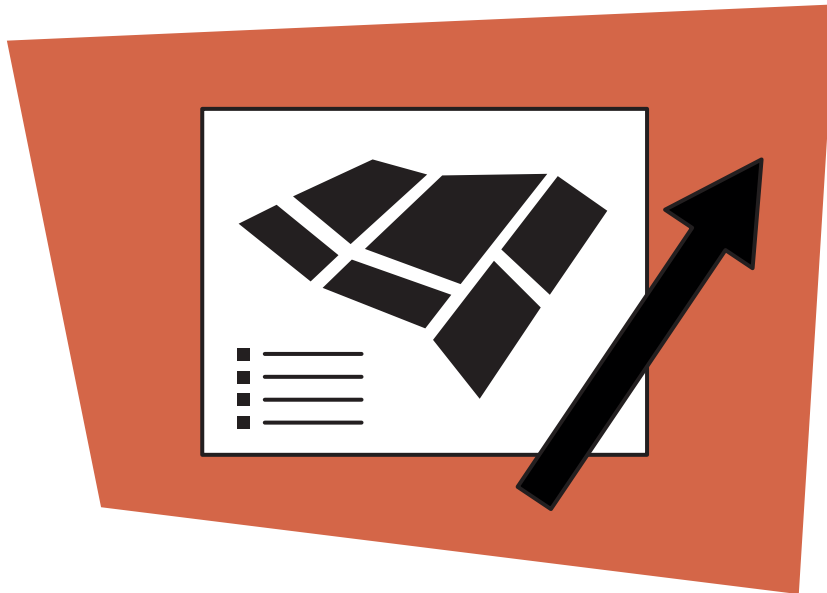
Objective 1 «knowledge repository» will provide a comprehensive and structured overview of present policies, existing data repositories, earlier and ongoing EU projects and good practices based upon MinLand industry land-use case studies. The case studies will cover the process from exploration to mining to re-use of the post-mining area.

2 Facilitate minerals and land use policy making



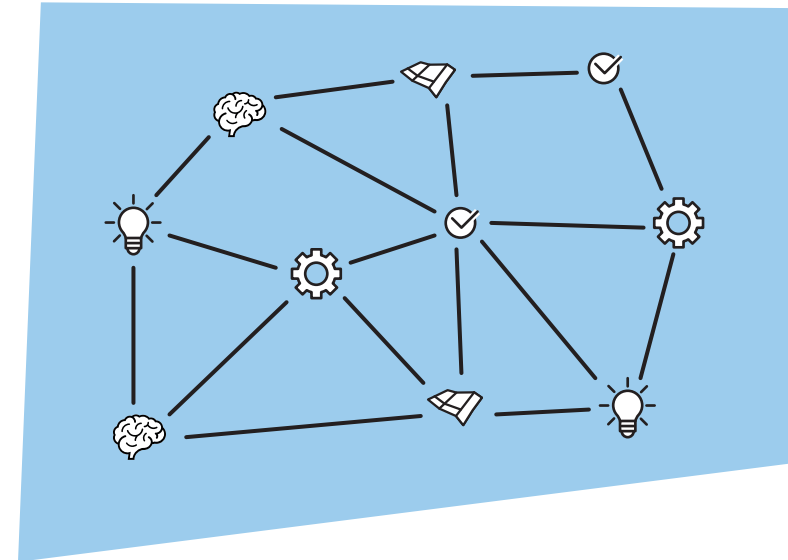
Objective 2 «facilitate minerals and land use policy making» will elaborate on: guidelines for linking land use- and mineral policies; and linking mineral deposits of public importance (MDoPI) with the safeguarding of mineral raw materials within EU and the implications for land use planning. The analysis of case studies will provide important status information and conclusions for practitioner guidelines. We will elaborate upon solutions to safeguarding and the strong connection to the evaluation of land for mineral exploration and exploitation vs other land uses.

3 Strengthen transparent land use practices



Objective 3 «strengthen transparent land use practices» will address issues such as: adequate land use data; adequate geological information; INSPIRE compatibility; necessary information; necessary tools; and necessary instruments, such as PERC and UNFC, FRB, etc. Analyses of case studies addressing these issues will provide input for the design of a selection of best practices. Conclusions and information gathered within the project will provide an important source at local, regional, national and EU-scale, for transparent land use practices.

4 Foster networking



Objective 4 «foster networking» will identify relevant stakeholders among the practitioners (i.e. land-use planners and mining authorities at local, regional and national levels etc.) and organise an interactive and open participation process, ensuring knowledge exchange and continuous learning, and supporting the dissemination of good practices. These overarching objectives are mutually supportive and can be further divided into specific sub-objectives. Each sub-objective is addressed by one or more of the project's WPs.

The project is coordinated by the Geological Survey of Sweden and has a broad participation of partners covering land use authorities, mining inspectorates, industrial and professional organisations, NGOs and a broad stakeholder group.

Mineral resources in sustainable land-use planning

Consortium Partners



Linked Third Parties



MinLand Contact

Coordinator, Mr Ronald Arvidsson,
Geological Survey of Sweden
Villavägen 18, 752 36 Uppsala, Sweden
Phone: +46 1817 9013
Email: ronald.arvidsson@sgu.se

Find us on

[@minlandproject](#) #MinLand
[f](#) [p](#) [in](#) [v](#) MinLand Project



www.minland.eu